

# Kingston Terrace Bus Stop Upgrade

Concept Design

NOVEMBER 2025





# Kingston Terrace Bus Stop Upgrade

## Scope of Works

This project includes the upgrade of existing Bus Stop 5 (north side of Kingston Terrace, North Adelaide) to be compliant with the Disability Discrimination Act (DDA).

The scope will also include the installation of a new stop, Bus Stop 5A (north side of Kingston Terrace near corner of Jerningham Street).

A new path will link Lefevre Terrace to Bus Stop 5.

All works will be in accordance with the requirements for Disability Standards as part of Accessible Public Transport.

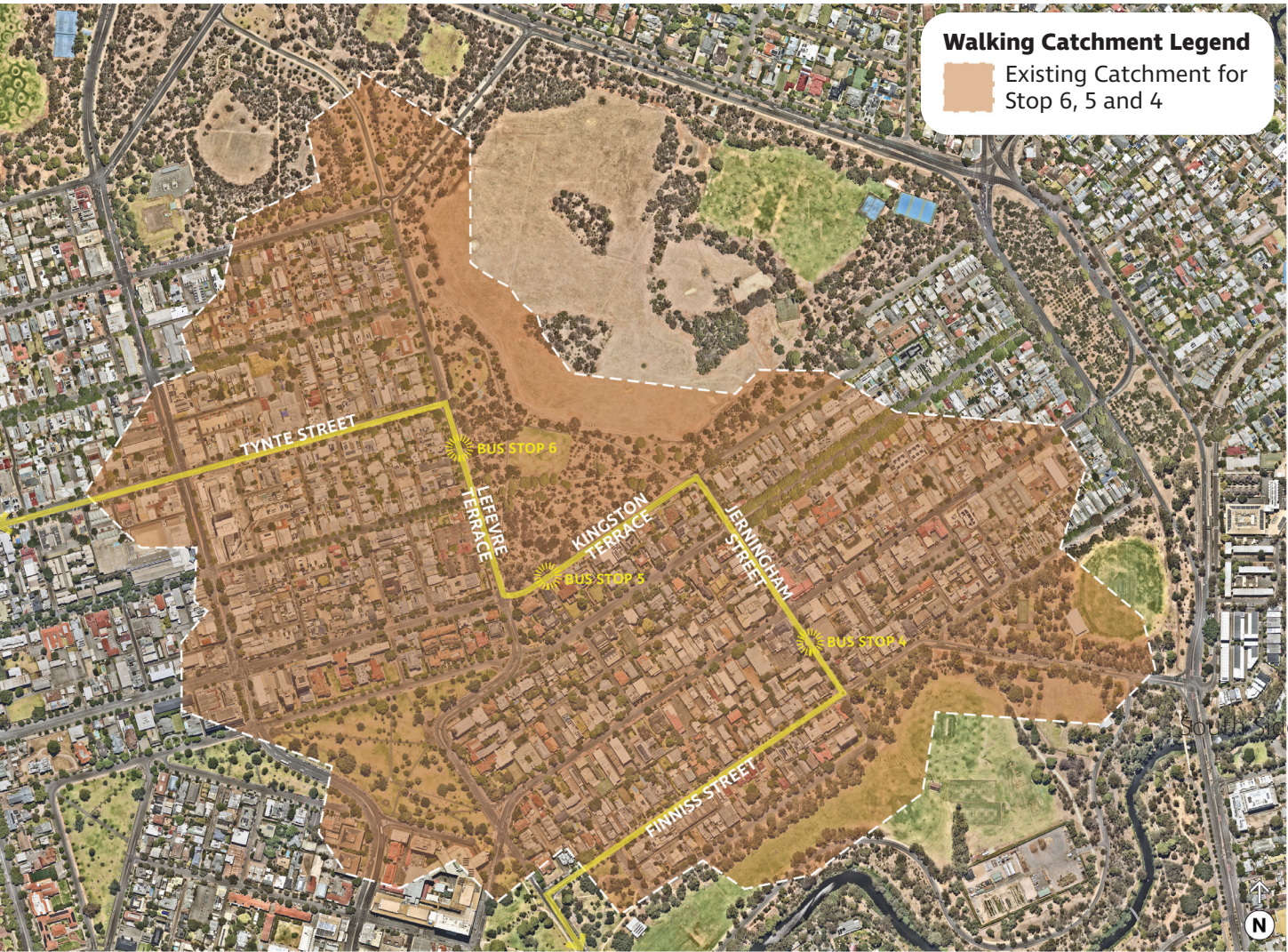




# Kingston Terrace Bus Stop Upgrade

## Walking Catchments and Boarding Numbers

### EXISTING



Distance Between Existing Bus Stops:

**Stop 6 to Stop 5** = 336m

**Stop 5 to Stop 4** = 556m

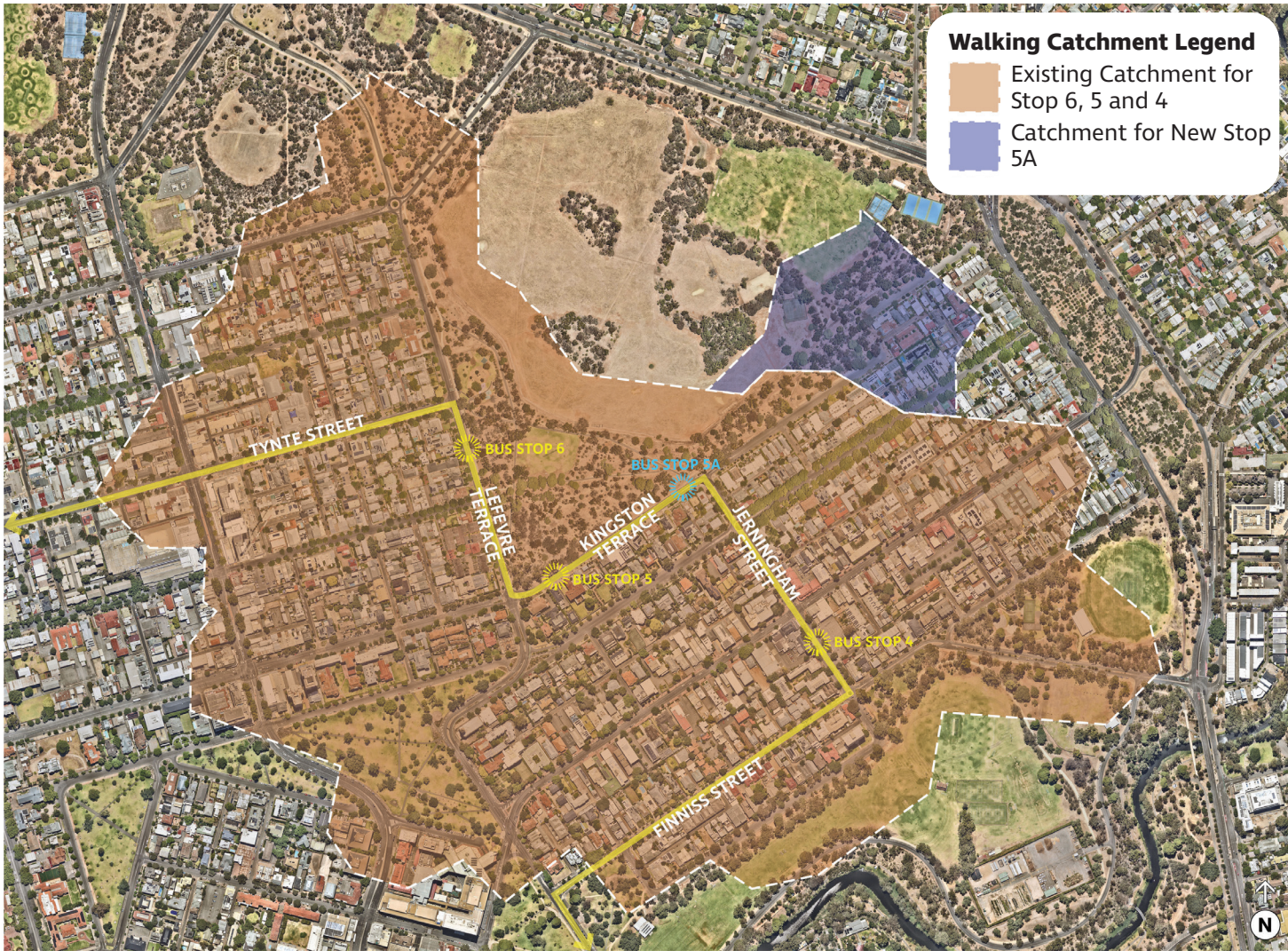
### AVERAGE NUMBER OF PEOPLE BOARDING PER DAY\*

	Stop 5 (South Side)	Stop 5 (North Side)
Weekdays	45	52
Weekend	6	30

\* For the month of February and March 2025

Note: The above boarding numbers have been provided by DIT and have indicate that the existing stops are well utilised.

### PROPOSED



Distance Between Bus Stops:

**Stop 6 to Stop 5** = 336m

**Stop 5 to Stop 5A (New)** = 230m

**Stop 5A (New) to Stop 4** = 326m

New Bus Stop 5A will:

1. Provide compliant walking distances between stops, consistent with DIT’s guidelines.
2. Increase the number of North Adelaide households within walking distance of the free bus service (blue shaded areas).
3. Improve accessibility and convenience by providing an option for residents to board the bus at the bottom of the Kingston Terrace hill. Passengers boarding at stop 5A will need to alight at Stop 5 and walk downhill towards their residences.



# Kingston Terrace Bus Stop Upgrade

## Bus Stop 5 (north side) Concept

### PROJECT LOCATION



View of existing gravel path to existing bus stop

### DESIGN FEATURES:

- 1 Compliant bus stop area with tactile paving
- 2 New bench seat
- 3 New accessible exposed aggregate concrete waiting area and footpath to match existing shared-use path along Lefevre Terrace
- 4 New path ('Country Tan' Exposed Aggregate, as pictured) to match existing gravel path alignment
- 5 Existing lighting to be protected and retained
- 6 Existing vegetation to be protected and retained. No removal of trees or plants.



'Country Tan' exposed aggregate concrete

### V1 EXISTING BUS STOP



### V1 ARTIST'S IMPRESSION





# Kingston Terrace Bus Stop Upgrade

## Proposed Bus Stop 5A (north side) Concept

### PROJECT LOCATION



View of existing parallel parking where new stop 5A is proposed

### DESIGN FEATURES:

- 1 New compliant stop, Bus Stop 5A area with tactile paving
- 2 Removal of 3 No. timed on-street car park spaces to accommodate length of bus zone.
- 3 New bench seat
- 4 New accessible exposed aggregate concrete waiting area to tie in with existing path and pram ramp in the Park Lands
- 5 Existing fence to be protected and retained
- 6 Existing vegetation to be protected and retained. No removal of trees or plants.

### V1 EXISTING BUS STOP



### V1 ARTIST'S IMPRESSION

